



March 1997

EMBARGO: 11:30 AM (CANBERRA TIME) WED 14 MAY 1997

Lease Finance

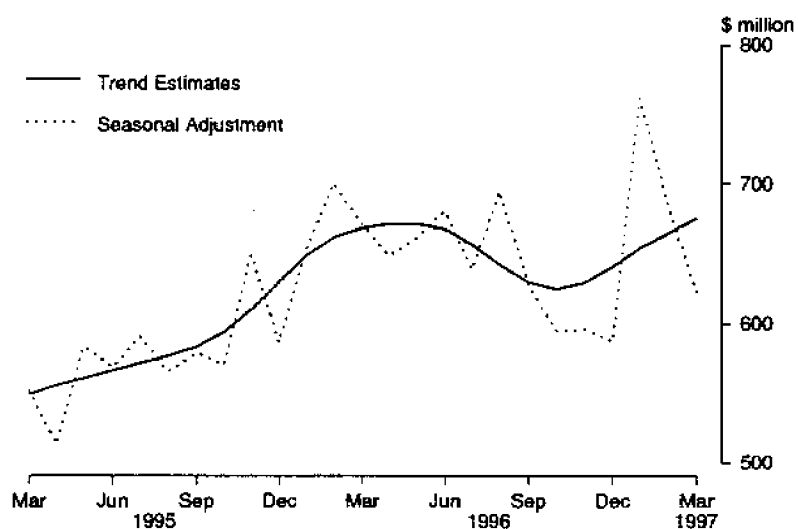
Australia

Data Report

© Commonwealth of Australia 1997

MAIN FEATURES

LEASE FINANCE, AUSTRALIA, MARCH 1995 – MARCH 1997



- 1** The provisional trend estimate for lease finance commitments made by significant lenders in March 1997 was \$675.6 million, an increase of \$10.7 million (1.6%) on February 1997 and an increase of \$7.0 million (1.0%) on March 1996.
- 2** Seasonally adjusted, lease finance commitments were \$622.5 million in March 1997, a decrease of \$63.8 million (9.3%) on February 1997 and a decrease of \$48.9 million (7.3%) on March 1996.
- 3** In original terms lease finance commitments in March 1997 were \$587.0 million, an increase of \$6.3 million (1.1%) on February 1997 but a decrease of \$85.8 million (12.8%) on March 1996.

INQUIRIES

- *for further information about these and related statistics, contact Phillip Lui on (02) 9268 4263.*
 - *for information about other ABS statistics and services please refer to the back cover.*
-

LEASE FINANCE commitments: SUMMARY OF MOVEMENTS IN MAJOR AGGREGATES: Original, seasonally adjusted and trend estimates, **MARCH 1997.**

Month	Value			Change from previous month			Change from corresponding month of previous year		
	Original	Seasonally adjusted	Trend	Original	Seasonally adjusted	Trend	Original	Seasonally adjusted	Trend
	\$ million	\$ million	\$ million	%	%	%	%	%	%
1996 —									
January	478.3	652.9	648.6	-24.5	11.4	3.0	28.6	20.8	19.4
February	595.3	700.9	661.7	24.5	7.4	2.0	24.8	23.0	21.3
March	672.8	671.4	668.6	13.0	-4.2	1.0	13.1	21.6	21.8
April	581.7	649.0	671.7	-13.5	-3.3	0.5	36.1	26.5	21.0
May	741.6	661.6	671.5	27.5	2.0	0.0	14.2	13.4	19.8
June	914.1	681.2	668.1	23.3	3.0	-0.5	11.1	20.0	18.0
July	755.2	639.1	656.8	-17.4	-6.2	-1.7	23.5	8.3	14.9
August	637.4	695.5	642.3	-15.6	8.8	-2.2	16.4	23.0	11.4
September	578.5	628.4	630.3	-9.2	-9.6	-1.9	2.0	8.6	8.1
October	598.4	595.2	625.2	3.4	-5.3	-0.8	10.4	4.5	5.3
November	566.8	595.8	629.5	-5.3	0.1	0.7	-8.0	-8.3	3.2
December	633.0	587.2	641.1	11.7	-1.5	1.8	0.0	0.2	1.8
1997 —									
January	558.8	762.2	654.4	-11.7	29.8	2.1	16.8	16.7	0.9
February	580.7	686.3	664.9	3.9	-10.0	1.6	-2.5	-2.1	0.5
March	587.0	622.5	675.6	1.1	-9.3	1.6	-12.8	-7.3	1.0

TABLE 1 — VALUE OF GOODS UNDER NEW FINANCE LEASE COMMITMENTS(a) — MARCH 1997
(\$ million)

Type of goods	Type of lessor				Total
	All banks	Finance companies	Money market corporations	General financiers	
AUSTRALIA					
Motor vehicles —					
Motor cars					
New					
Not subject to depreciation limit	49.4	92.1	3.6	14.0	159.1
Subject to depreciation limit	4.9	3.2	—	2.7	10.8
Used					
Not subject to depreciation limit	19.8	28.0	1.0	3.9	52.7
Subject to depreciation limit	2.4	0.7	—	0.9	4.0
Light trucks					
New	8.0	17.2	1.1	0.2	26.5
Used	4.4	4.3	—	0.3	9.0
Heavy trucks					
New	8.5	13.5	0.3	0.5	22.8
Used	1.8	5.1	—	0.5	7.4
Other motor vehicles					
Motor buses/coaches	2.9	2.0	—	—	4.9
Other	0.1	1.1	—	0.3	1.4
Trailers	3.4	3.6	—	0.3	7.3
Other transport equipment	6.3	5.5	0.2	0.5	12.5
Construction and earthmoving equipment	11.1	46.0	1.2	1.3	59.7
Manufacturing equipment	13.0	11.3	1.1	10.2	35.6
Agricultural machinery and equipment	23.1	13.5	—	6.1	42.7
Electronic data processing equipment	13.7	11.2	7.0	17.7	49.7
Office machines	2.7	2.7	11.7	21.1	38.3
Shop and office furniture, fittings and equipment	7.8	4.6	2.6	5.4	20.4
Other	15.0	4.6	0.1	2.5	22.1
Total	198.4	270.2	29.9	88.5	587.0
STATES(b)					
New South Wales	90.1	132.3	16.0	37.8	276.3
Victoria	36.3	40.1	13.5	23.2	113.2
Queensland	48.0	73.0	n.p.	n.p.	137.7
South Australia	4.0	7.8	—	2.1	13.9
Western Australia	16.2	10.8	0.3	4.5	31.9
Tasmania	0.6	1.0	n.p.	n.p.	4.0
Northern Territory	0.4	1.2	—	1.0	2.6
Australian Capital Territory	2.8	3.9	—	0.9	7.5

(a) Excludes leveraged leases. (b) From July 1996 Money market corporations and General financiers data is not available for publication for Queensland and Tasmania, but is included in totals where applicable.

TABLE 2 — VALUE OF GOODS UNDER NEW FINANCE LEASE COMMITMENTS(a) — ALL LESSORS

YEARS	Type of goods												Total motor vehicles \$m	
	Motor cars and station wagons						Motor vehicles							
	Used			New			Used			New				Other motor vehicles \$m
	Number	\$m	Number	\$m	Number	\$m	Number	\$m	Number	\$m	Number	\$m		
1993-1994	57,252	2,001.0	20,142	595.9	9,967	290.2	3,532	73.1	2,614	336.5	2,076	119.1	140.9	3,556.7
1994-1995	60,792	2,244.9	19,511	586.5	10,567	334.7	3,632	83.3	2,772	365.7	1,963	119.1	136.6	3,870.7
1995-1996	62,257	2,262.6	24,664	722.5	10,078	332.7	4,319	110.5	2,338	298.8	2,332	150.2	208.8	4,085.9
1996	3,886	144.8	1,810	55.2	596	20.4	273	6.4	119	13.1	158	10.0	9.0	258.9
January	4,892	174.6	2,154	65.2	749	25.2	315	8.2	136	18.2	257	15.2	23.6	330.1
February	5,509	197.1	2,170	63.8	818	26.7	346	12.7	226	28.9	217	14.5	14.3	358.1
March	4,838	168.0	1,760	53.4	728	23.3	293	7.6	166	22.2	175	10.8	19.4	304.5
April	6,012	206.7	2,389	70.5	1,070	34.9	406	9.9	218	26.2	218	15.0	19.2	382.4
May	6,858	248.7	2,585	72.1	1,364	43.7	449	12.1	295	41.2	313	18.8	17.9	454.5
June	6,588	240.6	2,507	73.2	1,119	36.4	440	11.0	215	26.8	271	14.1	14.3	416.4
July	4,927	178.3	2,124	61.4	818	25.8	359	9.0	203	24.6	239	16.2	14.5	329.8
August	4,629	156.7	1,891	51.3	725	25.7	329	7.8	184	26.3	205	13.5	16.8	298.1
September	5,085	172.6	1,934	52.0	707	24.9	360	9.3	159	14.2	225	15.9	16.1	308.6
October	4,970	168.7	1,963	54.9	656	22.6	312	8.1	199	25.8	157	10.7	11.3	302.2
November	5,548	181.7	2,332	52.8	780	28.2	336	8.3	196	25.6	151	11.2	16.7	324.5
December	4,944	148.2	2,109	58.6	719	22.8	316	7.7	127	21.3	163	8.2	13.8	280.6
1997	4,843	167.6	2,075	57.1	811	26.5	336	8.7	147	19.9	143	8.9	12.5	301.2
January	5,139	169.9	2,043	56.7	820	26.5	349	9.0	180	22.8	116	7.4	13.7	305.9
February	2,195	79.0	943	25.9	259	9.1	103	3.0	49	6.9	48	3.3	4.6	131.8
Vic.	1,161	38.1	436	12.5	127	4.6	36	1.1	31	5.4	18	1.2	3.4	66.3
Qld	1,013	35.0	481	12.8	343	10.2	173	4.1	56	6.6	63	3.3	2.4	74.4
SA	141	4.5	94	2.4	18	0.5	9	0.2	6	0.7	4	0.3	0.3	9.0
WA	215	6.9	77	2.2	32	1.2	10	0.2	3	0.3	6	0.4	0.7	11.8
Tas.	13	0.4	12	0.3	—	—	—	—	—	—	3	0.3	—	0.9
NT	19	0.8	19	0.6	6	0.2	1	—	2	—	1	0.1	0.6	2.3
ACT	86	3.0	13	0.4	26	0.8	4	0.1	—	—	—	—	0.4	4.7
STATES — FEBRUARY 1997	2,655	83.6	912	26.5	299	10.3	150	4.1	64	8.2	47	2.9	4.5	140.1
NSW	1,007	33.9	411	11.3	119	3.6	28	0.8	37	6.2	7	0.8	2.9	59.5
Vic.	1,033	37.2	474	12.4	338	10.6	120	3.0	51	5.6	44	2.5	5.4	76.7
Qld	132	4.1	86	2.3	20	0.6	15	0.3	11	1.2	1	0.1	—	8.6
SA	184	6.3	109	3.1	20	0.7	29	0.6	11	1.3	15	0.9	0.7	13.6
WA	14	0.5	16	0.4	4	0.1	3	0.1	2	0.1	2	0.2	—	1.4
Tas.	20	0.7	21	0.4	9	0.3	2	—	2	—	—	—	—	1.5
NT	94	3.6	14	0.3	11	0.4	2	—	2	0.2	—	—	—	4.5
ACT	—	—	—	—	—	—	—	—	—	—	—	—	—	—

(a) Excludes leveraged leases.

TABLE 2 — VALUE OF GOODS UNDER NEW FINANCE LEASE COMMITMENTS(a) — ALL LESSORS — continued
(\$ million)

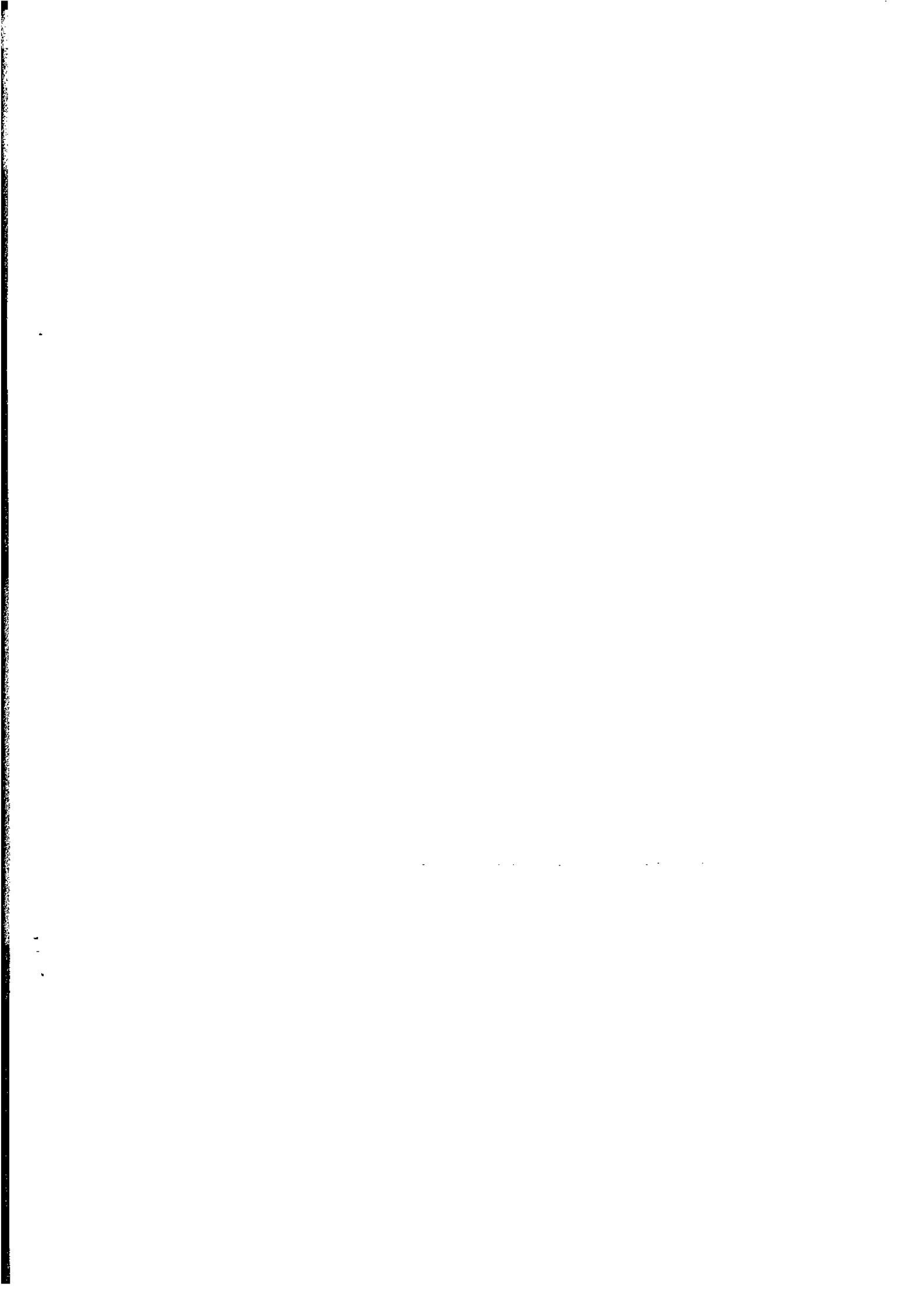
YEARS	Type of goods							Total finance lease commitments			Commitments not drawn at end of period	
	Other transport equipment	Construction and earthmoving equipment	Agricultural machinery and equipment	Manufacturing equipment	Electronic data processing equipment	Office machines	Shop and office furniture, fittings and equipment	Original	Seasonally Adjusted	Trend Estimates		
												Other
AUSTRALIA												
1993-1994	98.3	279.4	238.5	332.3	465.9	339.6	233.7	301.9	5,846.2	442.0
1994-1995	121.4	434.1	243.5	425.9	622.1	366.0	250.6	238.0	6,572.4	495.5
1995-1996	129.3	744.8	397.1	482.3	659.7	461.7	260.4	279.7	7,500.9	475.0
1996	4.5	64.2	18.9	29.2	33.1	34.2	14.3	21.2	478.3	652.9	648.6	446.2
January	11.0	65.6	24.6	27.3	59.2	38.4	18.8	20.3	595.3	700.9	661.7	456.5
February	12.6	71.5	46.7	38.6	59.8	40.5	19.9	25.1	672.8	671.4	668.6	468.2
March	10.5	59.4	41.2	41.2	47.7	34.5	21.7	20.9	581.7	649.0	671.7	447.9
April	14.2	88.5	56.4	53.5	51.0	46.0	20.8	28.9	741.6	661.6	671.5	464.3
May	14.8	82.3	92.8	79.9	75.3	52.2	34.7	27.6	914.1	681.2	668.1	475.0
June	19.2	86.0	41.5	43.7	46.5	45.0	21.9	35.0	639.1	639.1	656.8	455.3
July	9.2	72.0	19.9	51.5	56.3	41.8	18.9	37.9	637.4	695.5	642.3	443.9
August	12.0	70.7	24.6	30.7	43.4	50.7	19.4	29.0	578.5	628.4	630.3	447.2
September	10.2	58.4	34.2	41.6	56.9	38.6	24.5	25.4	598.4	595.2	625.2	449.0
October	8.3	68.1	29.7	34.9	40.0	40.7	19.7	23.2	566.8	595.8	629.5	406.7
November	8.0	70.5	25.6	50.4	55.0	43.0	30.1	25.9	633.0	587.2	641.1	324.2
December	14.4	61.2	32.5	31.5	61.2	35.5	22.8	19.1	558.8	762.2	654.4	332.9
1997	7.7	69.5	30.8	41.1	42.7	35.7	20.2	31.9	580.7	686.3	664.9	441.3
January	12.5	59.7	42.7	35.6	49.7	38.3	20.4	22.1	587.0	622.5	675.6	345.3
February	4.4	53.6	10.7	14.2	21.5	18.6	9.7	11.8	276.4	n.a.	n.a.	187.6
March	1.1	1.9	2.7	14.0	12.5	8.6	2.7	3.5	111.2	n.a.	n.a.	158.9
NSW	1.9	6.3	11.5	8.7	4.3	4.9	6.4	3.6	122.0	n.a.	n.a.	74.0
Vic.	0.1	0.3	0.6	0.5	1.4	1.8	0.7	0.8	15.3	n.a.	n.a.	4.2
Qld	0.2	7.2	4.0	3.3	1.3	1.3	0.4	11.5	41.0	n.a.	n.a.	14.5
SA	0.1	0.1	0.4	..	0.2	0.5	2.2	n.a.	n.a.	0.1
WA	..	0.1	1.1	0.1	3.6	n.a.	n.a.	0.2
Tas.	..	0.1	1.2	0.3	0.1	0.3	0.1	0.1	6.9	n.a.	n.a.	1.9
NT
ACT
STATES — FEBRUARY 1997												
NSW	4.7	47.3	11.8	12.0	24.1	18.6	8.2	9.5	276.3	n.a.	n.a.	147.6
Vic.	3.6	2.8	3.5	8.9	12.9	12.8	4.2	4.9	113.2	n.a.	n.a.	107.4
Qld	2.0	7.5	17.9	12.7	6.6	3.5	6.8	4.1	137.7	n.a.	n.a.	68.1
SA	0.4	0.4	1.2	0.4	0.9	1.1	0.4	0.5	13.9	n.a.	n.a.	6.2
WA	1.7	1.1	7.2	1.3	2.4	1.6	0.6	2.2	31.9	n.a.	n.a.	14.1
Tas.	..	0.1	0.1	..	1.4	0.4	..	0.7	4.0	n.a.	n.a.	..
NT	0.2	0.7	2.6	n.a.	n.a.	0.3
ACT	0.1	0.5	0.9	0.1	0.6	0.4	0.2	0.2	7.5	n.a.	n.a.	1.6

(a) Excludes leveraged leases.

TABLE 3 — VALUE OF GOODS UNDER NEW FINANCE LEASE COMMITMENTS (a) BY INDUSTRY OF LESSEE — ALL LESSORS
(\$ million)

YEARS	AUSTRALIA										Total			
	Agriculture, forestry, and fishing and hunting	Mining	Manufacturing	Construction	Wholesale trade	Retail trade	Transport and storage	Finance, investment and insurance	Property and business services	Recreation and other services		Public administration	Community services	Other industries
1993-1994	452.7	131.2	668.0	463.8	287.2	938.6	667.8	251.3	772.4	303.0	100.8	372.4	417.0	5,846.2
1994-1995	441.3	159.2	778.1	513.5	297.7	1,267.9	714.9	268.5	846.6	394.9	78.0	397.6	414.3	6,572.4
1995-1996	616.8	177.6	854.6	833.9	325.3	1,128.5	845.4	257.0	923.8	348.3	107.2	376.1	706.4	7,500.9
1996	31.9	15.6	50.6	67.1	18.7	71.4	47.7	14.0	57.1	21.5	5.3	25.8	51.4	478.3
January	43.9	11.2	58.5	71.8	26.3	85.0	68.0	26.7	68.4	30.4	9.4	33.5	62.2	595.3
February	65.0	10.4	71.6	80.1	28.0	93.6	85.6	17.9	87.5	25.0	8.7	33.5	66.0	672.8
March	57.7	13.9	60.5	71.4	26.5	76.5	59.2	26.1	75.5	22.3	10.0	26.8	55.3	581.7
April	75.1	32.9	80.4	83.8	31.7	102.4	80.6	21.8	84.3	29.3	17.0	33.1	69.4	741.6
May	121.9	32.0	101.8	106.1	34.8	136.0	94.8	28.6	96.3	33.6	21.1	38.0	69.1	914.1
June	62.5	14.5	80.8	102.2	33.3	127.6	77.1	21.6	88.6	29.8	15.1	28.8	73.5	755.2
July	37.0	21.6	78.5	83.7	27.2	80.6	65.5	29.4	82.2	25.4	16.9	29.8	59.5	637.4
August	38.4	22.7	65.5	79.4	18.9	69.7	69.0	24.2	73.8	24.1	14.9	27.4	50.5	578.5
September	48.6	14.4	67.9	71.1	20.8	87.4	65.2	20.0	81.5	22.6	19.0	30.0	50.0	598.4
October	45.4	13.4	66.3	81.0	25.2	78.7	65.7	16.5	70.6	23.0	11.3	26.1	43.5	566.8
November	45.6	25.9	66.1	80.4	22.6	76.3	72.0	15.0	94.8	30.4	20.7	30.3	52.8	633.0
December	43.7	13.6	62.2	75.3	26.9	69.8	56.4	33.9	67.1	27.7	18.3	22.7	41.2	558.8
1997	47.2	12.3	66.1	79.4	19.9	67.0	51.7	19.1	98.5	26.7	16.4	24.8	51.8	580.7
January	60.4	9.2	63.0	79.8	20.5	65.8	57.8	17.5	93.5	25.4	15.1	27.1	51.9	587.0
February	12.6	4.0	24.6	58.1	8.4	35.4	22.0	6.9	44.4	13.4	8.2	10.1	28.4	276.4
March	4.9	1.1	23.6	4.2	6.0	13.0	12.6	7.0	19.4	3.1	4.7	5.2	8.2	113.2
NSW	19.3	1.6	13.2	13.8	4.0	11.8	12.7	3.1	18.8	6.8	1.0	6.3	9.5	122.0
Vic.	0.9	0.7	2.7	0.9	0.4	1.6	1.6	0.5	1.7	1.2	0.4	1.4	1.1	15.3
Qld	7.6	4.8	1.6	1.7	0.5	2.9	1.5	1.5	12.8	1.3	0.4	1.0	3.5	41.0
SA	0.5	—	0.1	0.2	—	0.5	0.3	—	0.1	0.1	0.1	0.2	0.1	2.2
WA	—	—	0.1	0.3	0.2	0.6	0.3	0.1	0.1	0.2	1.3	0.2	0.3	3.6
Tas.	1.3	—	0.3	0.2	0.3	1.1	1.1	0.1	1.1	0.5	0.2	0.3	0.6	6.9
NT	—	—	—	—	—	—	—	—	—	—	—	—	—	—
ACT	—	—	—	—	—	—	—	—	—	—	—	—	—	—
STATES — FEBRUARY 1997	16.0	3.1	25.9	54.1	10.0	37.6	23.3	8.0	43.5	11.1	5.9	10.8	27.0	276.3
NSW	5.8	1.7	17.0	5.1	3.7	10.2	15.6	5.4	22.6	2.1	5.6	6.4	11.9	113.2
Vic.	26.4	2.4	15.0	14.7	4.7	12.1	13.4	2.8	22.2	6.7	0.8	7.7	8.8	137.7
Qld	1.4	0.3	2.7	1.1	0.3	1.6	1.8	0.3	0.9	1.0	0.4	0.5	1.6	13.9
SA	9.1	1.7	2.0	3.7	1.1	2.5	2.8	0.5	2.7	3.1	0.5	0.8	1.4	31.9
WA	0.6	—	0.1	0.2	0.3	0.5	0.3	0.1	0.3	0.5	0.4	0.3	0.4	4.0
Tas.	—	—	—	0.2	0.1	0.5	0.1	—	0.1	0.3	0.9	0.1	0.2	2.6
NT	—	—	—	—	—	—	—	—	—	—	—	—	—	—
ACT	1.2	—	0.4	0.6	0.2	0.9	0.6	0.3	1.2	0.5	0.5	0.4	0.7	7.5

(a) Excludes leveraged leases.





For more information . . .

The ABS publishes a wide range of statistics and other information on Australia's economic and social conditions. Details of what is available in various publications and other products can be found in the ABS Catalogue of Publications and Products available from all ABS Offices.

ABS Products and Services

Many standard products are available from ABS bookshops located in each State and Territory. In addition to these products, information tailored to the needs of clients can be obtained on a wide range of media by contacting your nearest ABS Office. The ABS also provides a Subscription Service for standard products and some tailored information services.

National Dial-a-Statistic Line

0055 86 400

Steadycom P/L: premium rate 25c/21.4 secs.

This number gives 24-hour access, 365 days a year, for a range of important economic statistics including the CPI.

Internet

<http://www.abs.gov.au>

A wide range of ABS information is available via the internet, with basic statistics available for each State, Territory and Australia. We also have Key National Indicators, ABS product release details and other information of general interest.

Sales and Inquiries

Keylink STAT.INFO/ABS
X.400 (C:Australia,PUB:Telememo,O:ABS,FN:STAT,SN:INFO)
Internet stat.info@abs.telememo.au

National Mail Order Service (06) 252 5249
Subscription Service 1800 02 0608

	Information Inquiries	Bookshop Sales
SYDNEY	(02) 9268 4611	9268 4620
MELBOURNE	(03) 9615 7755	9615 7755
BRISBANE	(07) 3222 6351	3222 6350
PERTH	(09) 360 5140	360 5307
ADELAIDE	(08) 8237 7100	8237 7582
HOBART	(03) 6220 5800	6220 5800
CANBERRA	(06) 252 6627	207 0326
DARWIN	(08) 8943 2111	8943 2111

Information Services, ABS, PO Box 796, Sydney NSW 2001

